

TerrusM



Introducing *TerrusM* by AutoMap

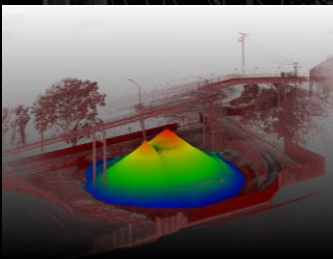
The world's **most accurate** mobile SLAM System

TerrusM is designed to meet the challenging demands of subterranean mapping in Australia's mining industry. Building on CSIRO's CatPack sensor and the latest Wildcat SLAM engine, the TerrusM has been rigorously tested with Tier1 Australian mining customers. The CSIRO Data61 team used the CatPack sensors in the US DoD DARPA Subterranean Challenge in 2021 and generated the most accurate maps of any team.

AutoMap continues to extend the capabilities of the system, including multi-camera colorization of the point clouds, an easy-to-use GCP/Target integration software system, and integration with our GeoFuse cloud platform.

- Mining
- Tunneling
- Subway Inspection
- Construction Verification
- Warehouse and Inventory
- Parking Structures
- Re-Construction
- Forestry
- Stockpiles

- Sub-2 cm accuracy and localization precision
- 300,000 points per second
- 100m range LiDAR
- 120° Vertical Field-of-View LiDAR
- 360° Horizontal Field-of-View LiDAR
- Full 360° panoramic 4K color camera
- Vehicle mount scanning up to 30kph
- Backpack mounting option
- Ruggedized for Mining, Construction, Tunneling
- 3kg Total Weight
- Easy to use GCP/Target integration



AutoMap

AutoMap Pty, Ltd
Level 9, 39 Sherwood Rd.
Toowong QLD 4066
Australia
© AutoMap 2021

TerrusM



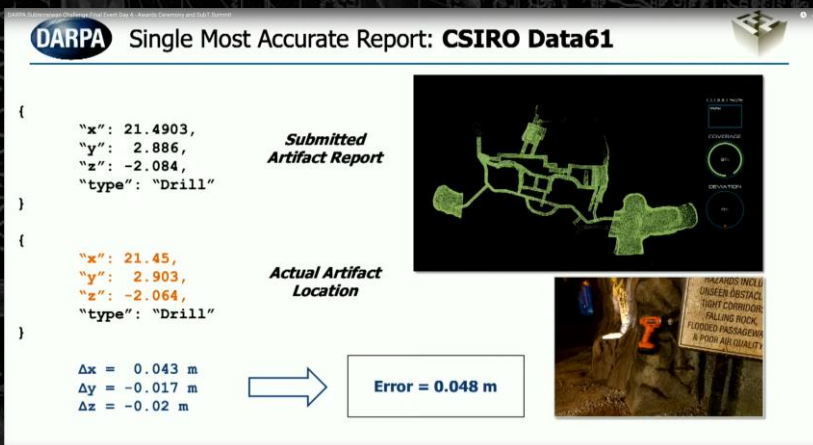
Colorized Point Cloud at Mine Portal

Rugged
Versatile
Accurate



The TerrusM is based on the CatPack, as seen here on a CSIRO Data61 robot in the DARPA SubT Challenge

Most Accurate Map at the DARPA SubT Challenge, with 0% deviation



AutoMap

AutoMap Pty, Ltd
Level 9, 39 Sherwood Rd.
Toowong QLD 4066
Australia
© AutoMap 2021