

TERRUSM • RUGGED UNDERGROUND

TerrusM

ULTRA LOW DRIFT | COLOURISED | MOBILE | ACCURATE

Award-winning underground capture.

A waterproofed, rugged SLAM system built for the toughest reality-capture jobs — mines, tunnels, shafts, declines, drawpoints. Deployed on foot, vehicle, or robotic platforms. Same-day .las or .ply outputs, on device.

Designed for the challenging demands of subterranean mapping, TerrusM has been vigorously tested with **Tier-1 mining customers**. A tightly coupled 360° 4K colour camera arrangement and on-device processing make it the ideal solution for a wide variety of scanning applications.



• TERRUSM SENSORPACK & TERMINAL

2.4kg

SENSOR PACK WEIGHT

600k

POINTS PER SECOND

4k

360° COLOURISATION

IP64

RUGGED & SEALED

CAPABILITIES

Fast and accurate underground mapping

Built for harsh environments

Sealed against dust and water, balanced for tight access. Built to keep capturing where consumer hardware quits.

360° 4K colourisation

Hardware-synchronised cameras around the sensor pack add true-colour context to every point in the cloud.

Ultra-low drift

WildcatSLAM keeps long captures grid-aligned. Survey control integrates cleanly when you need it.

Shaft & drawpoint kits

Accessory ecosystem extends TerrusM to vertical shafts, declines, and drawpoint scanning workflows.

Same-day outputs

On-device processing produces .las or .ply formats — share before you leave site.

Stream to cloud

Direct upload into OrbisFuse for measurement, annotation, and team sharing.

Powered by **Wildcat SLAM**

Built with CSIRO's prize-winning **WildcatSLAM** odometry engine — the most accurate mobile SLAM available, proven in international competition.

• 1ST PRIZE, MOST ACCURATE MAPS — DARPA SUB-T CHALLENGE 2021

• WINNER — HILTI SLAM CHALLENGE 2022

SENSOR SPECIFICATIONS

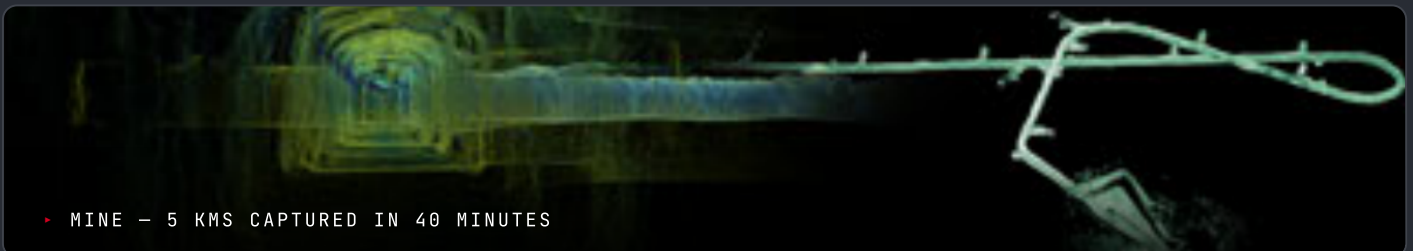
LIDAR	Rotating Velodyne VLP-16
RANGE	100 m
LOCAL RESOLUTION	10–20 mm
POINTS / SECOND	600,000 (dual return mode)
FIELD OF VIEW	360°
CAMERAS	4× 4K colour cameras
SCAN PROFILES	Backpack · Vehicle · Sky Hook
GEOREFERENCING	GCP realignment, UTM frame
OPERATION	Real-time
FILE TYPE	LAS or PLY
IP RATING	IP64
WEIGHT	2.4 kg
POWER	12–36 V DC

TERMINAL SPECIFICATIONS

SIZE	11.6" Full HD 1080p
INTERFACE	Touch screen
CPU	8-core ARM 64-bit
GRAPHICS	512-core Volta GPU
RAM	32 GB
SSD	2 TB
WIFI	802.11 a/b/g/n
EXPORT	USB-C · sFTP · OrbisFuse
POWER	12–42 V DC



• DESIGNED FOR VERSATILITY – UNDERGROUND DEPLOYMENT



• MINE – 5 KMS CAPTURED IN 40 MINUTES

01

Deploy

Walk, drive, or lower TerrusM into the environment. The sensor pack is ready in seconds.

02

Map

WildcatSLAM tracks the trajectory underground; 4K cameras add colour without breaking sync.

03

Export

Generate .las or .ply on-device. Push to OrbisFuse or hand off to your GIS pipeline directly.

APPLICATIONS

• Underground mapping

• Shaft inspection

• Plant digitization

• Building documentation

• AEC

• Road scanning

SALES

sales@automap.io
0438 753 678

OFFICE

14 Simpsons Rd
Bardon QLD 4065, Australia

ECOSYSTEM

Pair with **VellusX** for RTK/PPK GPS fusion,
or **OrbisFuse** to host & share captures.

